

# North London Breast Screening Service

## What to expect at the assessment clinic.

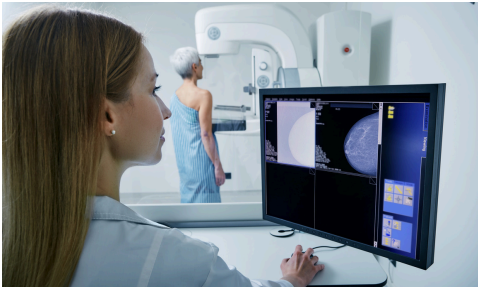


An **easy guide** about what to expect at your visit.

# ASSESSMENT CLINIC



**Why are we seeing you again?**



**There's something we would like to check.**



**What will we do?**



**We need to do the tests again.**



**You may feel worried.**

**This does not mean you have  
cancer.**



**If you need to speak to us.**

**0203 758 2025**

**Monday - Friday - 9:00 AM - 5:00 PM**



**A breast care nurse will call you  
back to answer your questions.**

# WHEN YOU ARRIVE AT THE CLINIC



**Our receptionist will check who you are.**



**Our breast care nurse will talk to you.**

**They will tell you why are you at the clinic.**

**They will tell you about any tests they need to do that day.**

# YOU MAY BE SEEN BY LOTS OF PEOPLE IN THE CLINIC



**CLINIC ASSISTANT**



**RADIOLOGIST**



**DOCTOR**



**BREAST CARE  
NURSE**



**MAMMOGRAPHERS**

# TESTS THEY MAY DO



## Breast X-ray (Mammogram)

(An X-ray of the breast tissue while it is gently pressed by the machine.)



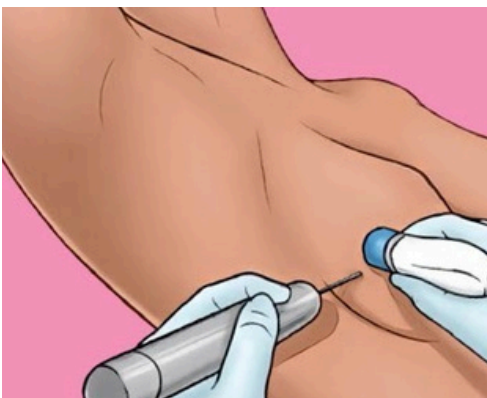
## Ultrasound

(This will show a picture of the breast tissue.)



## Breast Exam

(A physical examination of the breast by a doctor.)



## Biopsy

(A small amount of tissue taken from the breast. We will numb the area before.)

# HOW LONG IS THE APPOINTMENT?



**Your visit may take between 2 and 4 hours.**

**If you have a biopsy, it may take the full four hours.**



**You might like to have someone support you when you visit us.**

# TEST RESULTS



**If your tests are clear we will tell you on the day.**



**If you have a biopsy, results will take longer to get.**

# BEFORE YOU LEAVE THE CLINIC



**We may need to see you again in the clinic, but not always.**

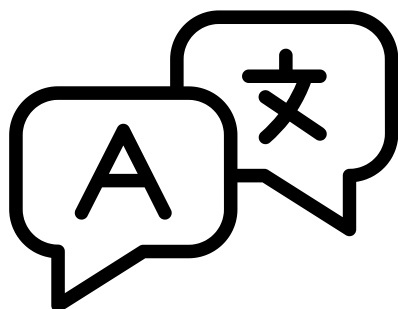


**If you have had a biopsy, we will make an appointment for you to get results.**



**Most women will receive a normal result.**

# HELPFUL INFORMATION



Do you need help with how  
to talk to us?



We need **48** hours to arrange an  
interpreter.



The machines allow most  
wheelchair access.



Please do not wear any deodorant or  
talcum powder on your underarms  
before your visit.

# PARKING



**Only 2 disabled bays are available in the car park.**



**You can pay for parking in:**

- **Visitor Car Park A**
- **Visitor Car Park B**

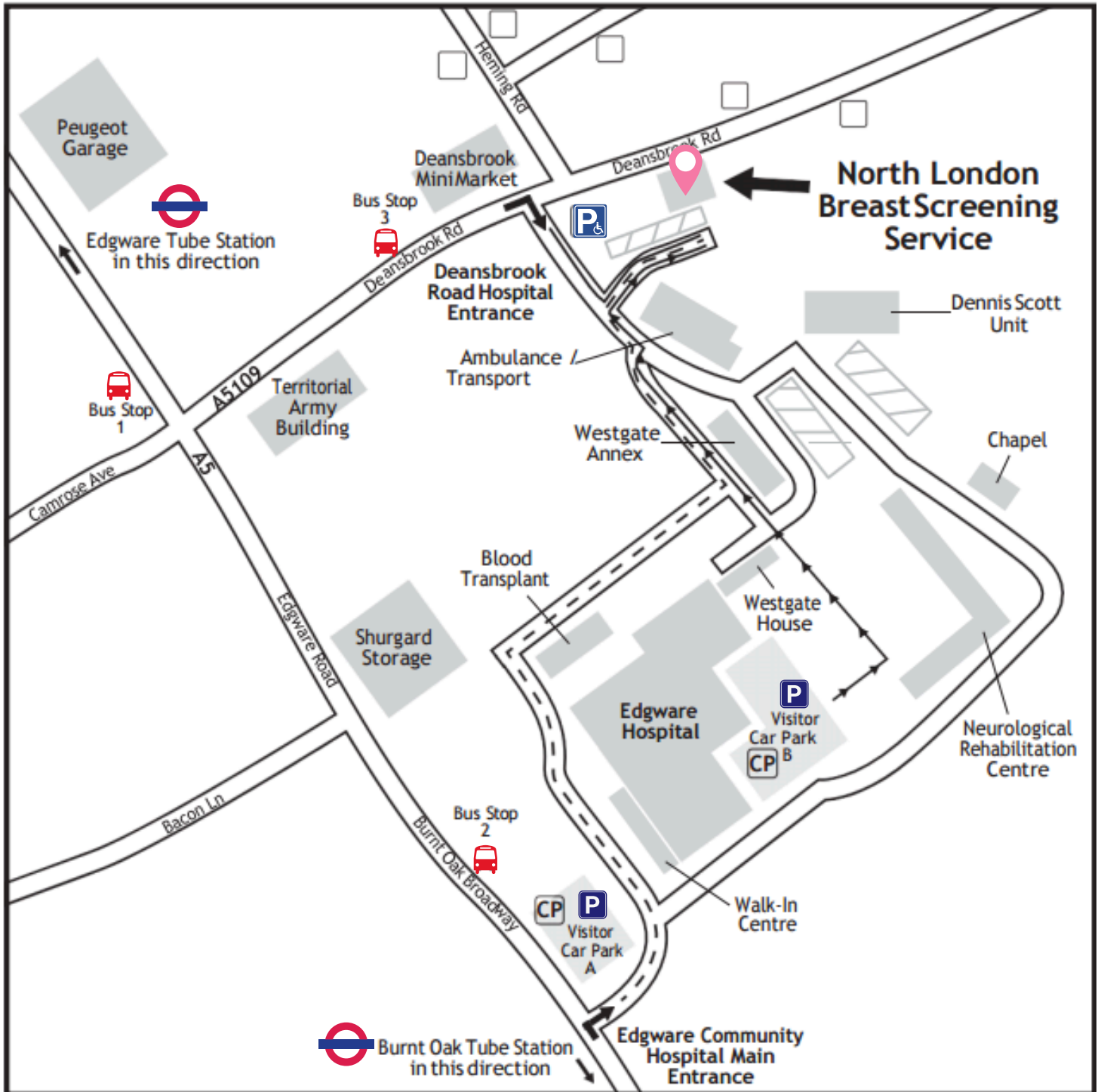


**There is a drop off area.**



**You can park on the streets nearby, but check the rules on each road.**

# TRAVEL INFORMATION





Tube stations nearby are on the northern line.



1. BURNT OAK
2. EDGWARE

Then you can take a short bus ride from there to the hospital.



## BUS ROUTES

**BUS STOP 1:** 32, 142, 204, 292, 251, 288 & 641.

**BUS STOP 2:** 32, 142, 204, 292, 251, 288 & 614.

**BUS STOP 3:** 303.

**ADDRESS:**

**NORTH LONDON BREAST SCREENING  
SERVICE**

**EDGWARE COMMUNITY HOSPITAL**

**DEANSBROOK HOUSE, DEANSBROOKE  
ROAD**

**EDGWARE**

**HA8 9BA**



## CONTACT INFO:



**020 3758 2025**

